

## OVERVIEW

The **TS-7400** is a compact computer module (System-On-Module) based upon the Cirrus **EP9302 ARM9 CPU**, which provides a standard set of on-board peripherals. The EP9302 features an advanced **ARM920T 200 MHz** processor design with MMU.

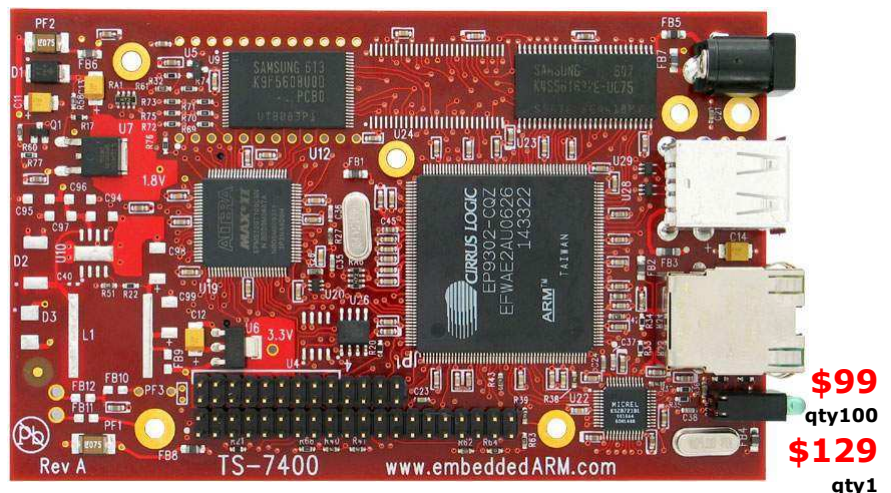
The TS-7400 includes a standard **SD Card socket** and a 40-pin header that brings out many interfaces, including **audio, GPIO** and **ADC**. In addition, an one-piece setup with **802.11g WIFI** integrated inside a rugged **enclosure** is available, making this solution ideal for use in wireless sensor network, data acquisition/recorder applications, PoS, vehicle telemetry transmitter units, etc.

## 1.1s ULTRA-FAST BOOTUP

The TS-7400 has a tweaked **bootup firmware** and Kernel that, along with the hardware accelerated NAND controller and **hardware ECC**, enables ultra-fast bootup to a Linux shell prompt in **1.1 seconds**.

## FEATURES

- 200Mhz **ARM9 CPU** with MMU
- Boots Linux out-of-the-box in **1.1 seconds**
- Linux Bootloader (**Linux boots Linux**)
- **TS-Linux** Embedded Operating System Installed
- 32 MB **SDRAM** (64 MB or 128 MB optional)
- 32 MB on-board **NAND Flash** (128 MB optional)
- 1 **SD Card** socket - up to 4 GB Cards
- 1 **10/100 Ethernet** port
- 2 **USB 2.0** Compatible OHCI ports (12 Mbit/s Max)
- 40-pin header provides 3 **TTL COM** ports, 4 **A/D** channels, 20 **DIO**, **AC97/I2S audio**, **SPI** bus
- Watchdog timer
- **Fanless -40°** to +70° C, +85° C w/ CPU@166Mhz
- Optional On-Board **Temperature Sensor**
- Optional Battery Backed Real Time Clock (**RTC**)
- Optional Linux-supported **USB 802.11g WIFI**
- **RoHS** Compliant
- Small size: 2.9 x 4.7 inches
- **TS-9441** Peripheral Board for development
- Visit [TS-7400 webpage](http://www.embeddedARM.com) for further information



## LINUX FOR ARM

TS-7400 SoM includes **TS-Linux** embedded OS for ARM installed by default in **Flash** memory. **Debian Linux** can also be used with larger Flash drives. Both are full featured **real-time** capable Linux systems.



## DEVELOPMENT KIT



The **TS-ARM** Development Kit includes the **Debian Linux** on a 512 MB Flash drive, all the **documentation**, a CD with Linux Kernel and application **source codes**, a **power supply**, and various cables and connectors.

## TS-WIFIBOX APP KIT

We provide a **one-piece** setup with TS-7400 controller, Hammond Manufacturing **aluminum enclosure**, internal 802.11g WiFi card integrated and end-plates which bring out 1 ethernet, 1 USB, 2 LEDs, power input and external antenna, as shown.



**We have been in business over 20 years!**

We've built our business on **excellent products, low prices and exceptional support**. We sell a wide variety of off-the-shelf PC/104 SBC's and peripherals, and offer custom configurations and designs with excellent pricing and turn around time.

**Technologic Systems** has never discontinued a **product**. You can count on long term availability when you include our SBC's and peripherals in your design.