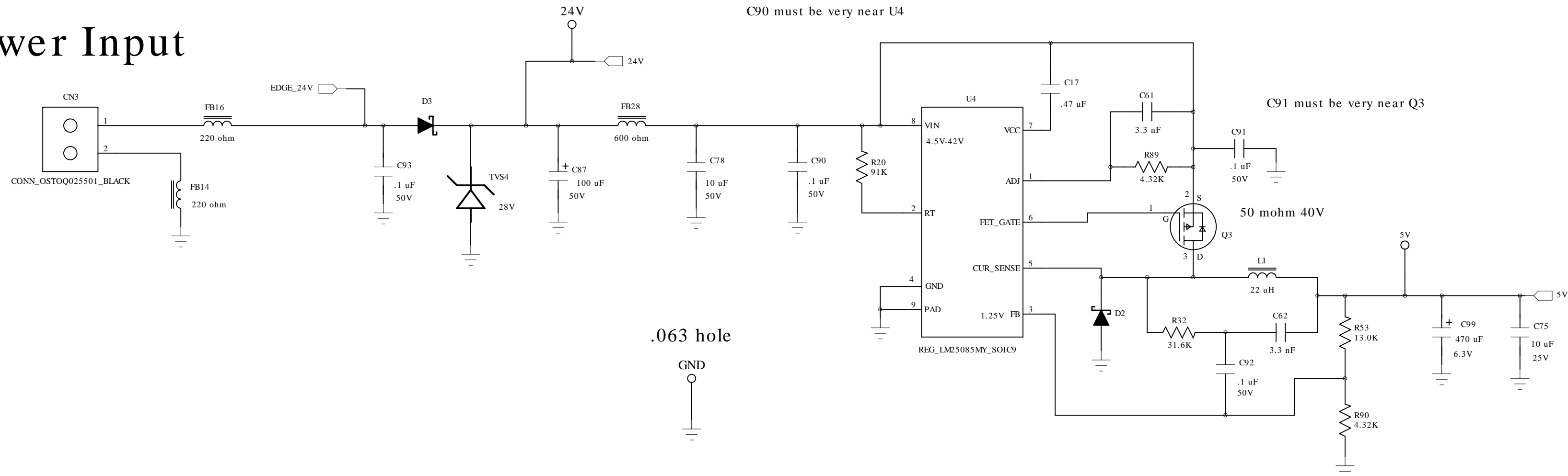


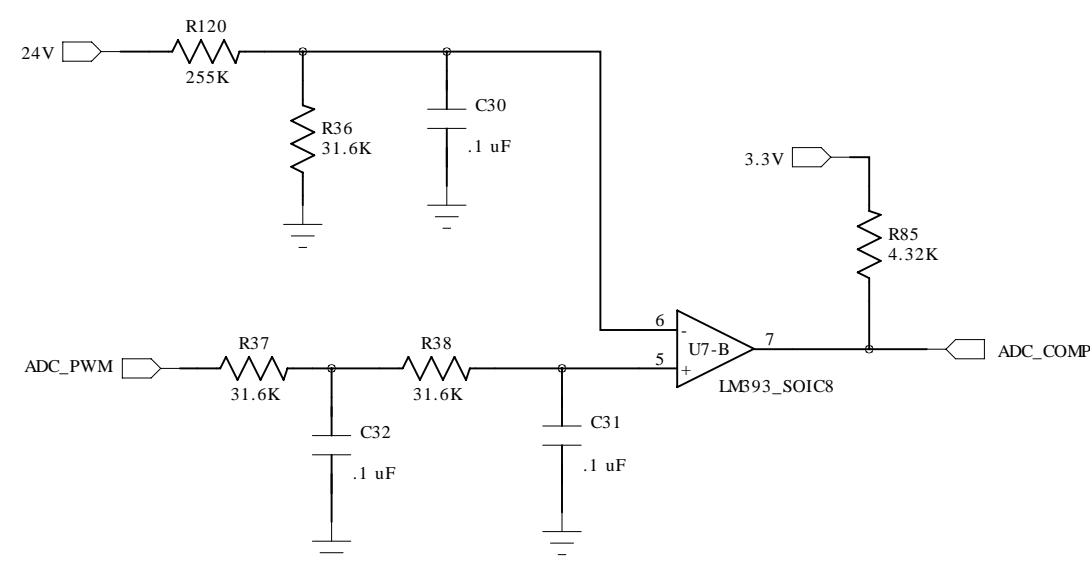
5V Power Supply (2.0 Amps)

20-28 VDC

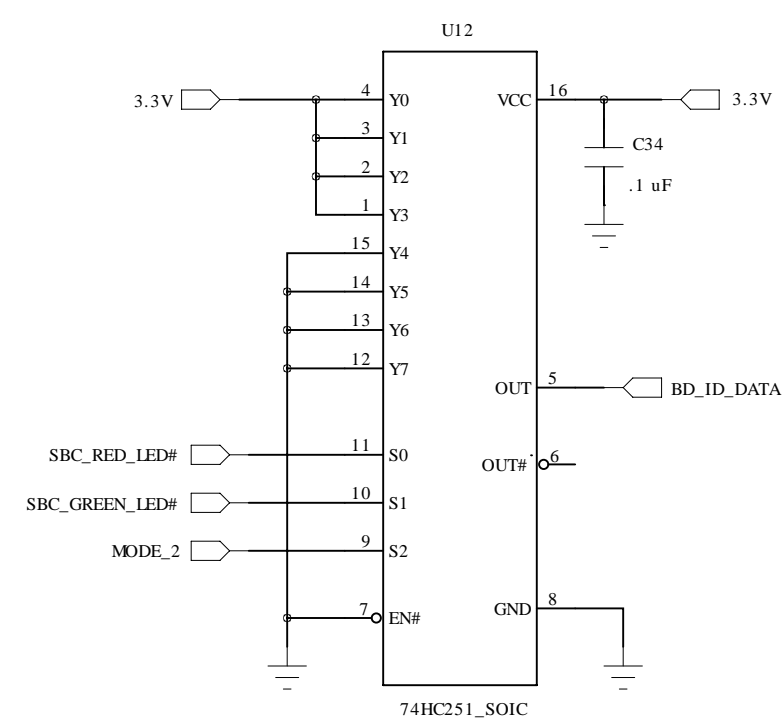
Power Input



A/D Converter



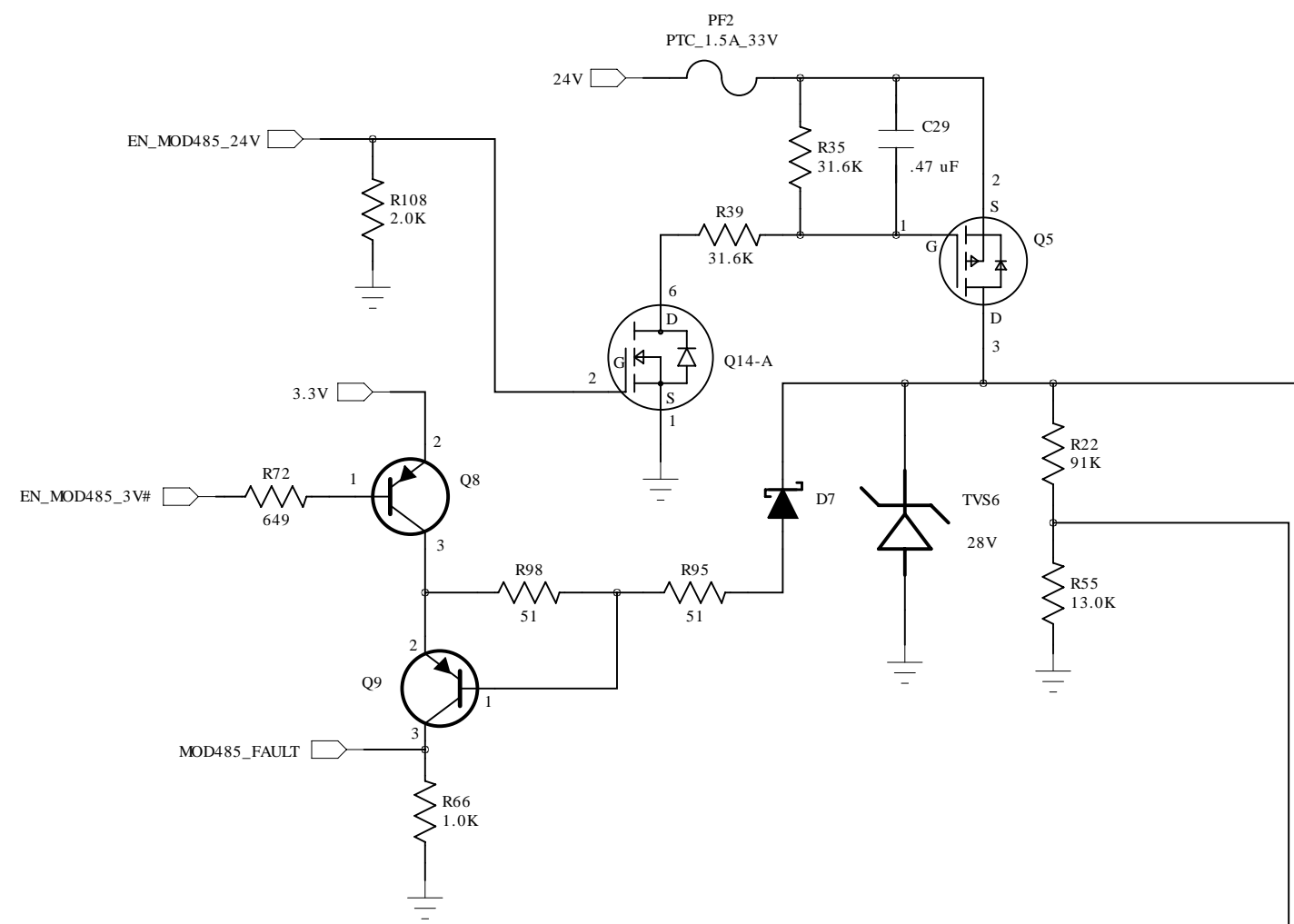
Board ID = 15



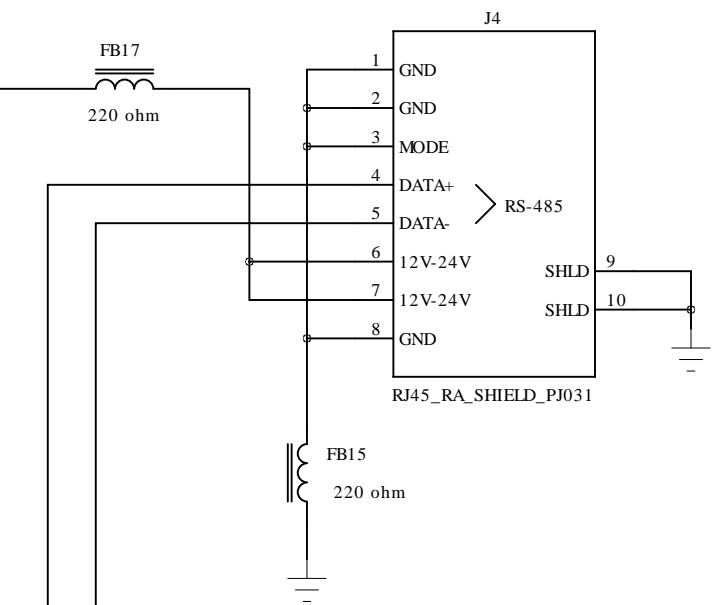
Technologic Systems	Date Nov. 25, 2012
Title: TS-8380 5V Reg. and ADC	
Rev: A	Designer RLM
Sheet 1 of 10	

ModBus RS-485

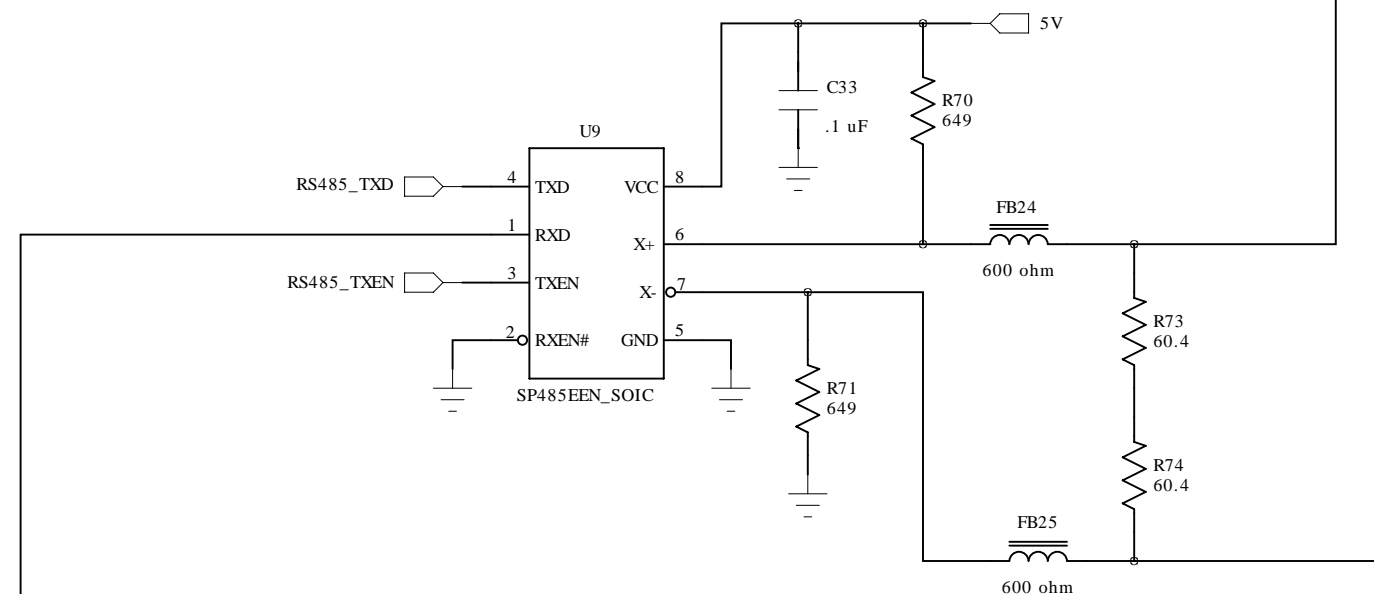
Power Switch



ModBus Shielded RJ45

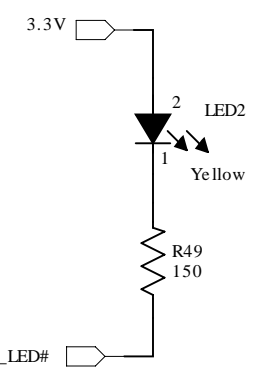
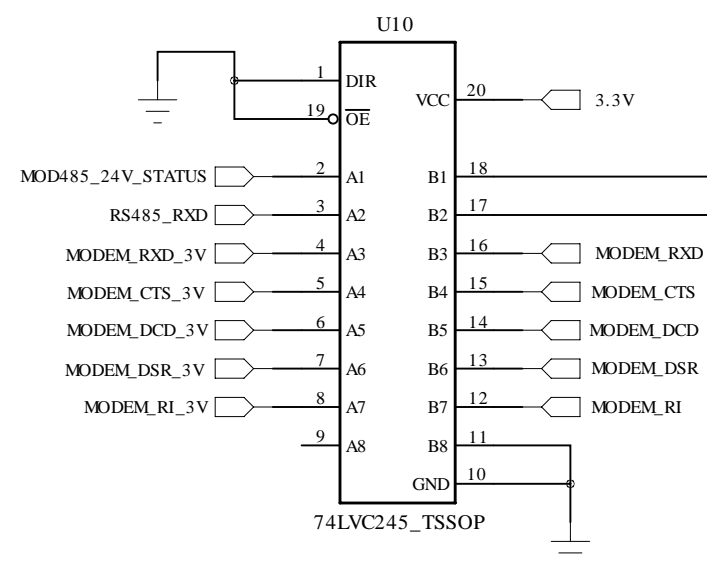


RS-485 Driver



Level shifter

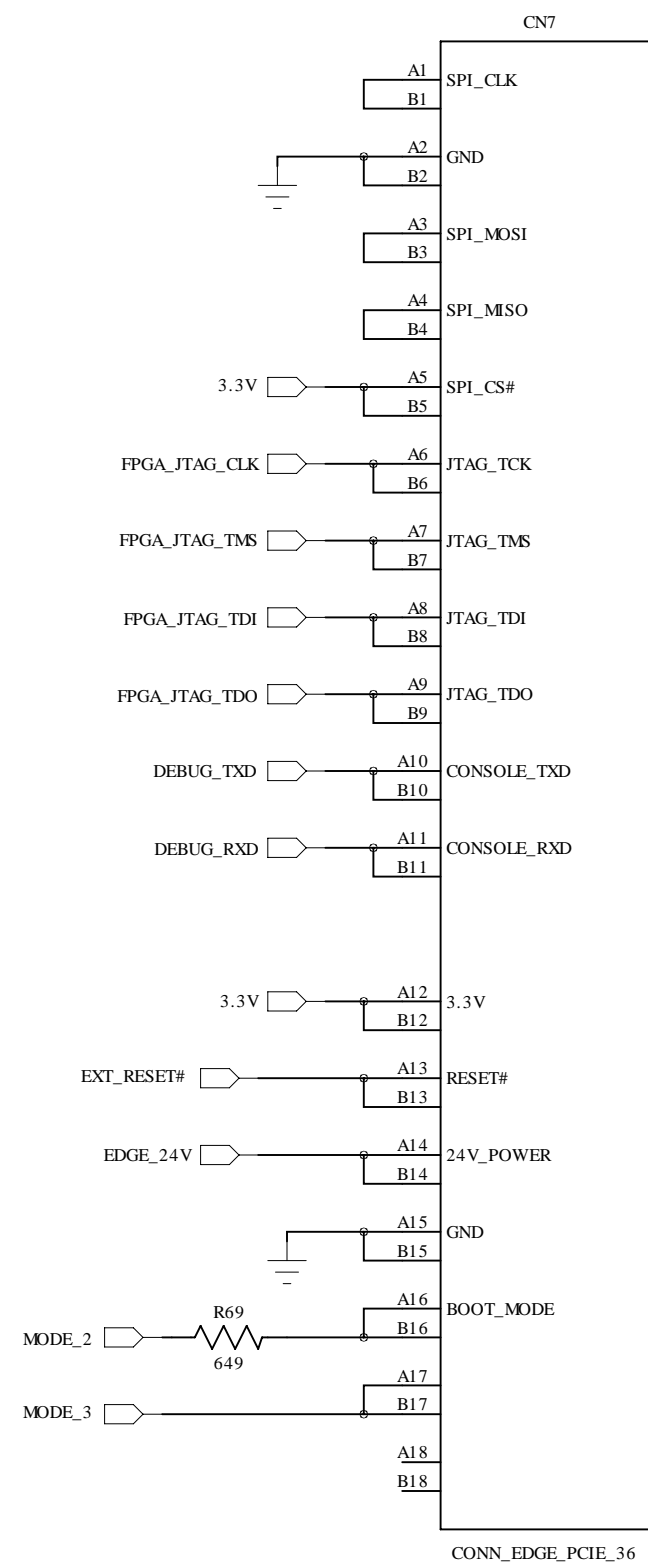
3.3V ← 5V



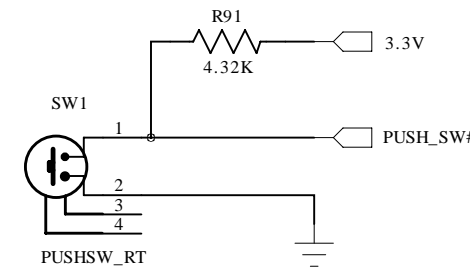
LED = Paralight # LED-L-H311006E

Misc.

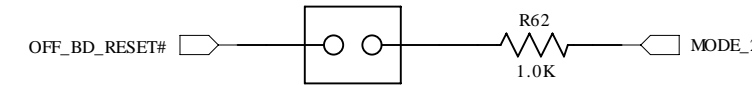
Console Edge Conn.



Push Switch

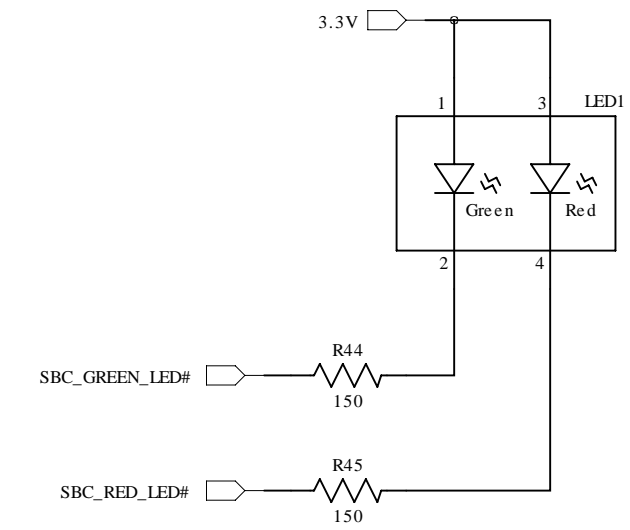


SD Boot

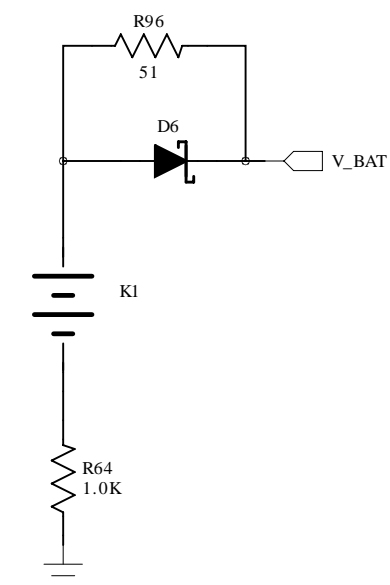


Front Panel

LEDs

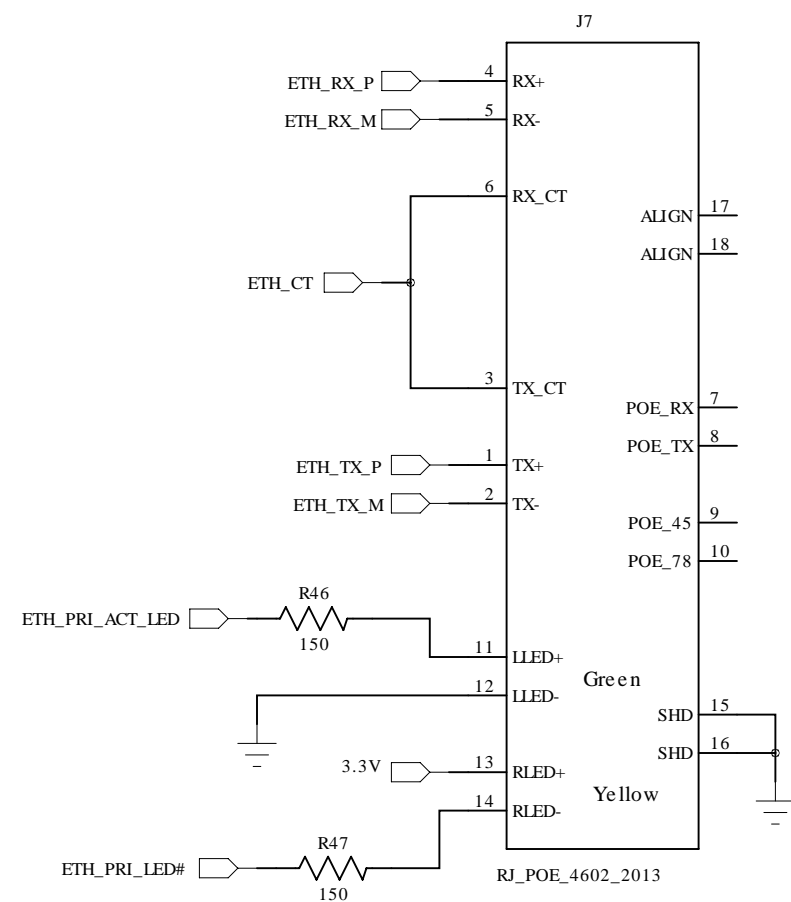


RTC Battery

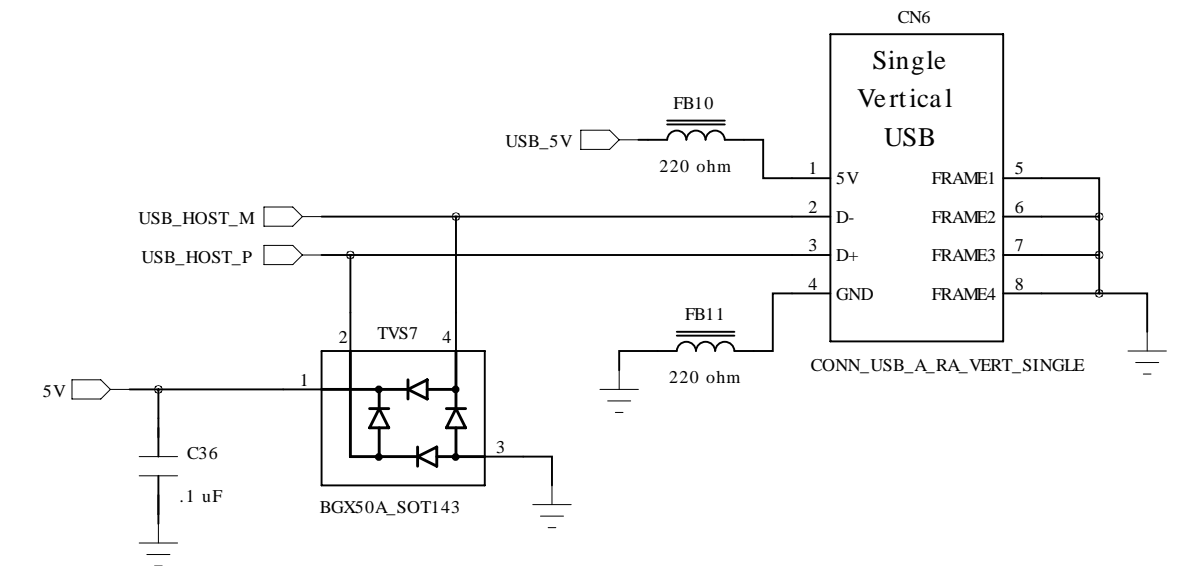


USB and Ethernet Ports

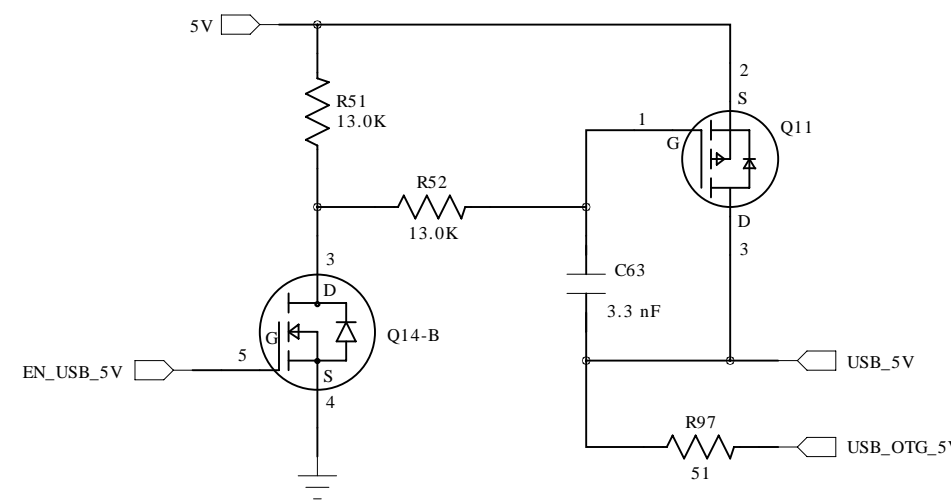
Primary Ethernet



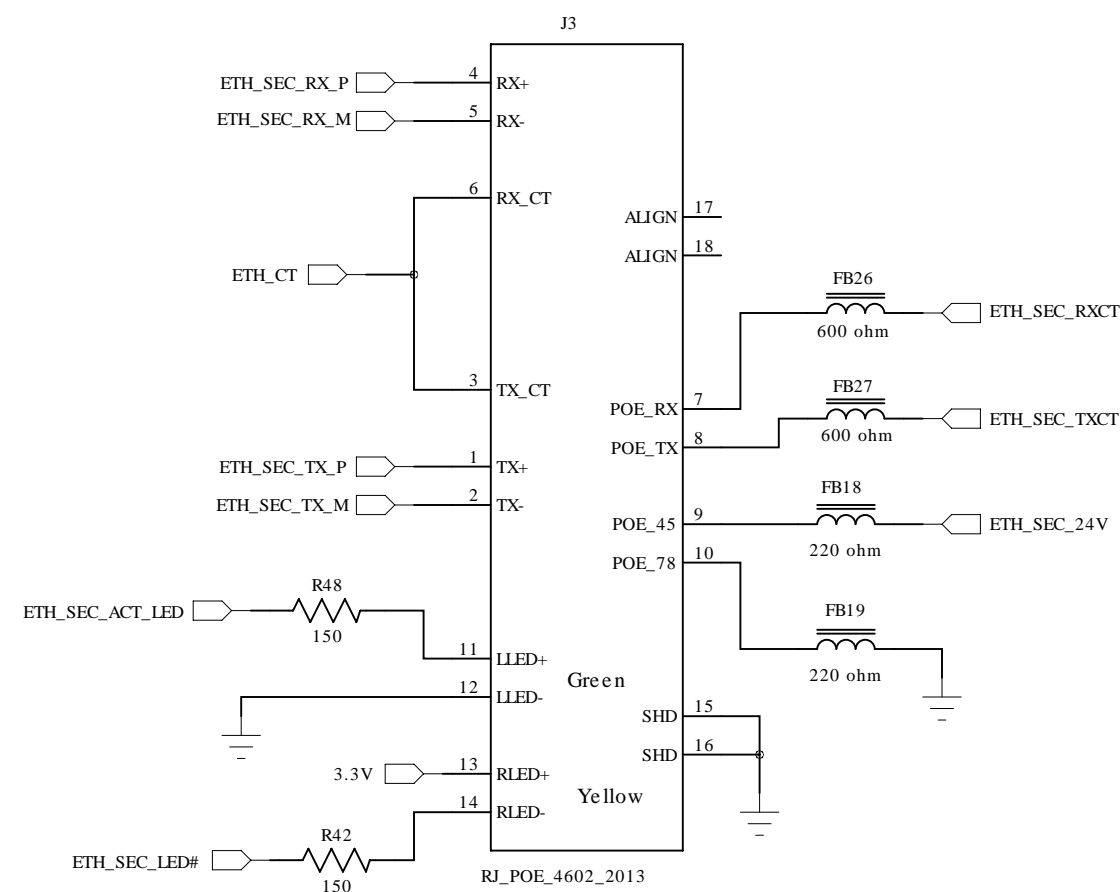
External USB Port



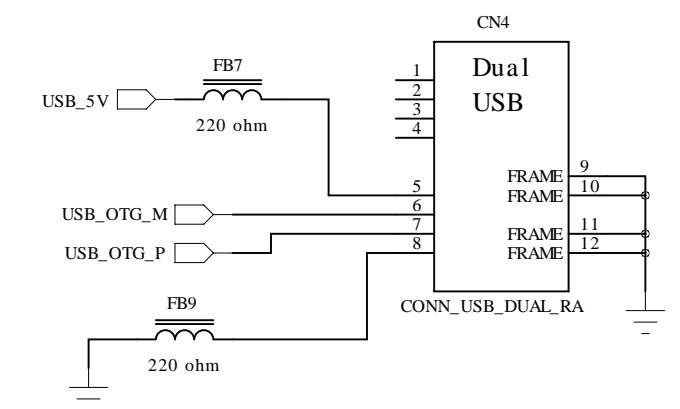
USB Power Switch



Secondary Ethernet



Internal WiFi USB Port

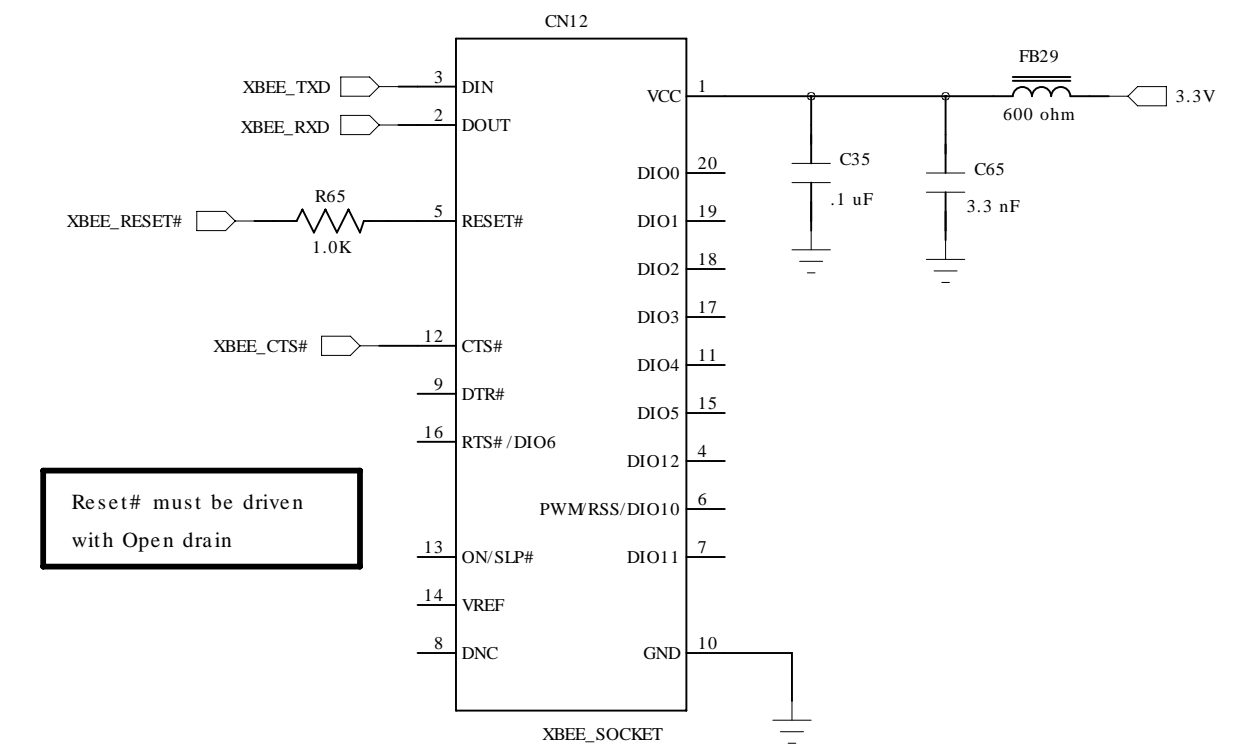


Technologic Systems		Date Nov. 25, 2012	
Title: TS-8380 USB and Ethernet Ports			
Rev: A	Designer RLM	Sheet 4 of 10	

Ethernet Power

Digi/MaxStream

XBee Radio

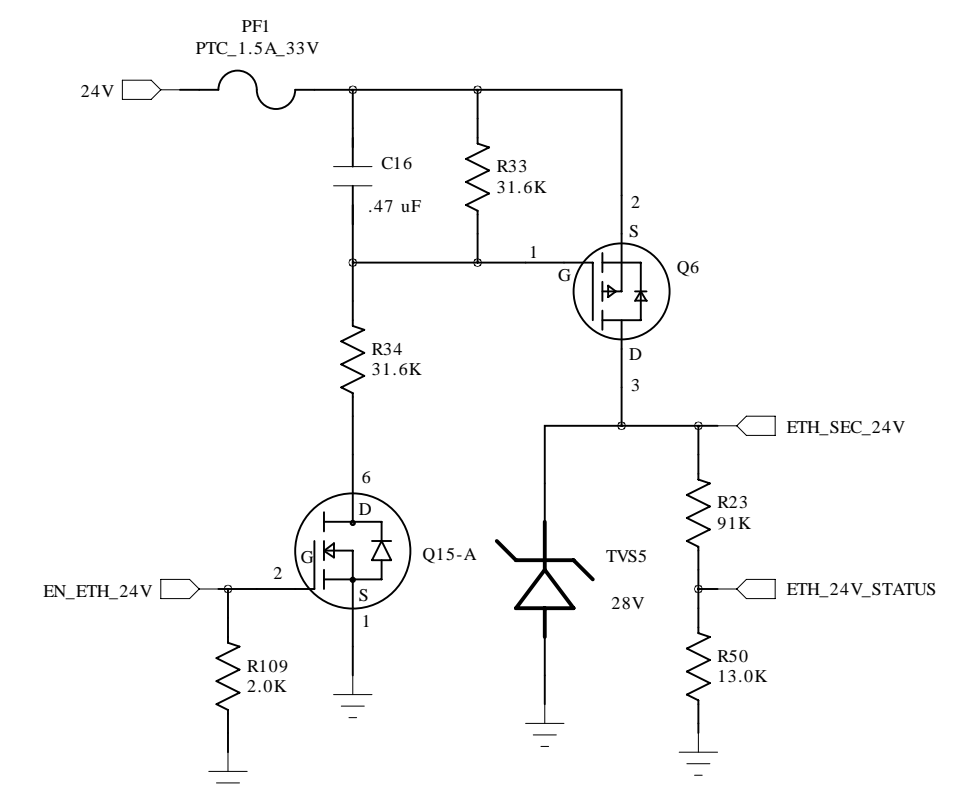


Reset# must be driven with Open drain

Baud rates up to 230.4K supported

CTS# is an output that can be used for hardware flow control

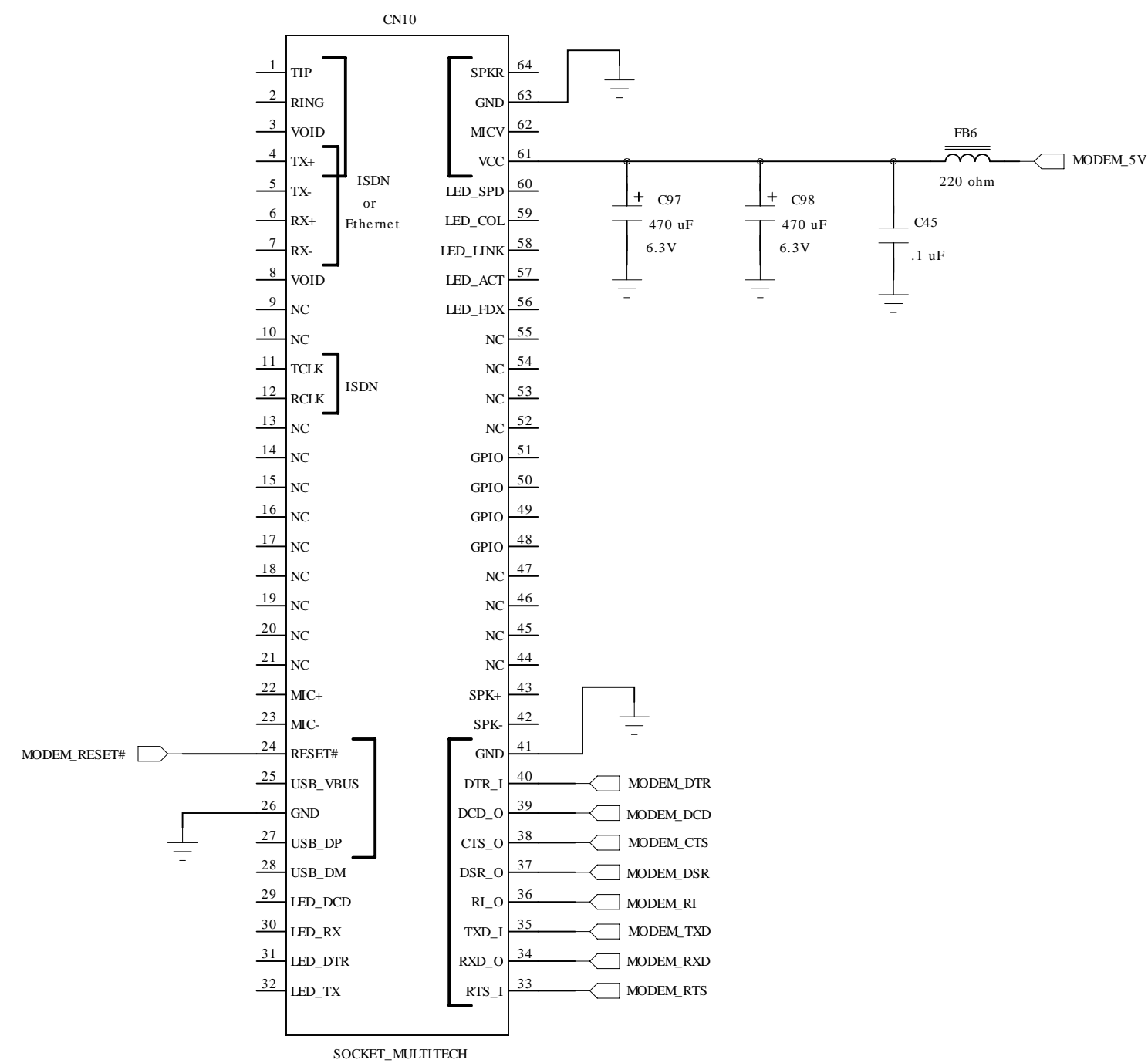
Ethernet Power Switch



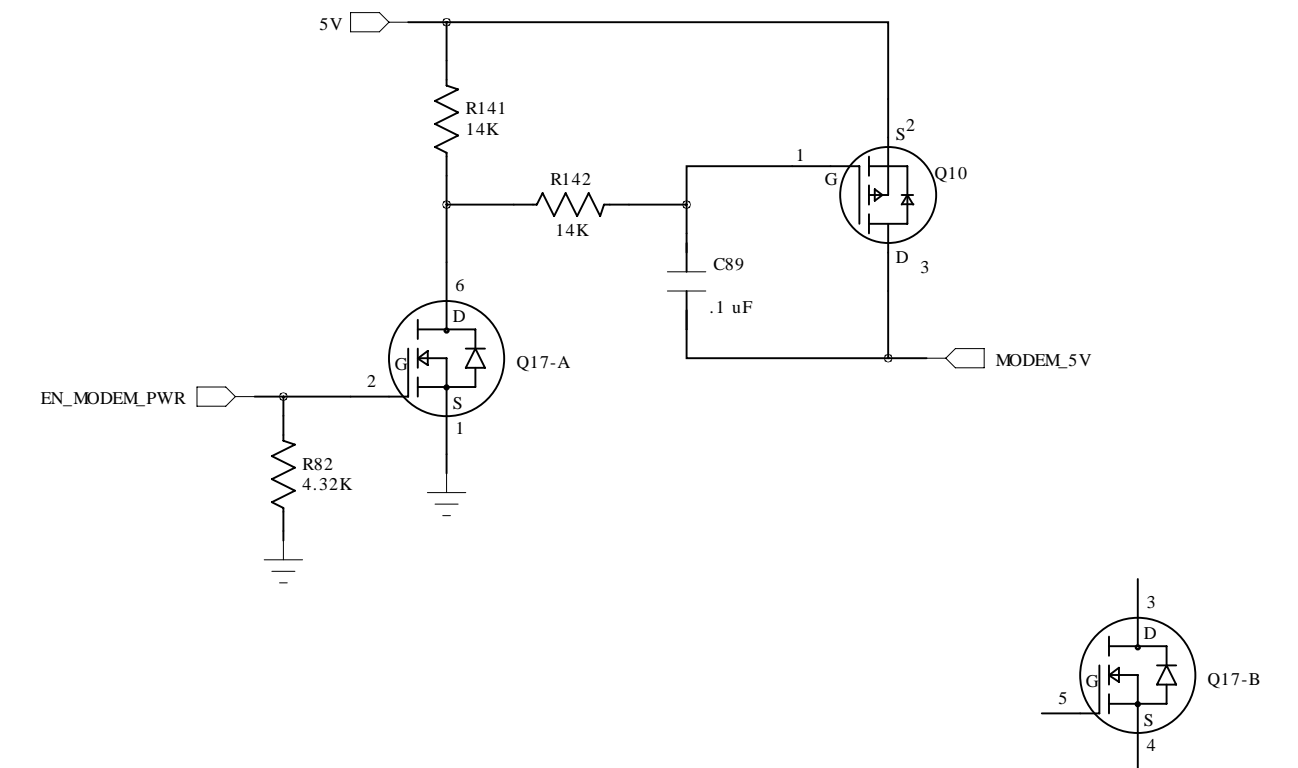
Technologic Systems	Date	Nov. 25, 2012
Title: TS-8380 Ethernet Power		
Rev: A	Designer	RLM
		Sheet 5 of 10

Modem and LCD Touch

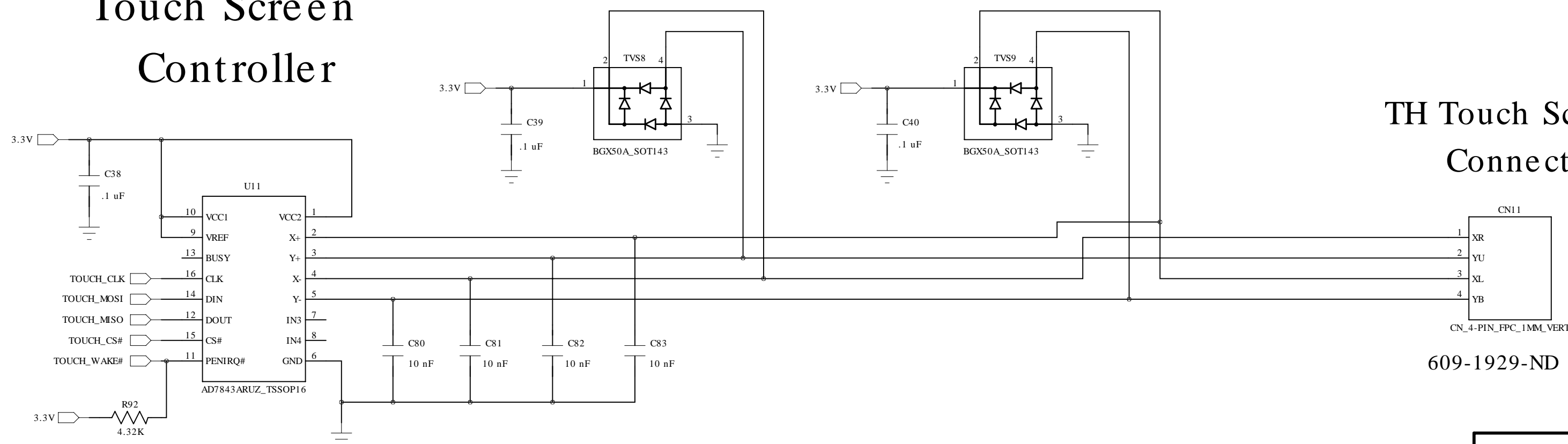
Modem



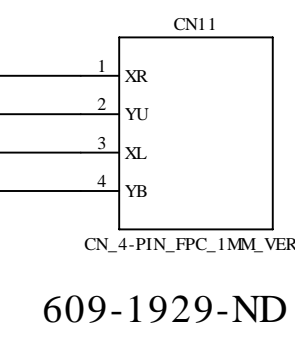
Modem Power Switch



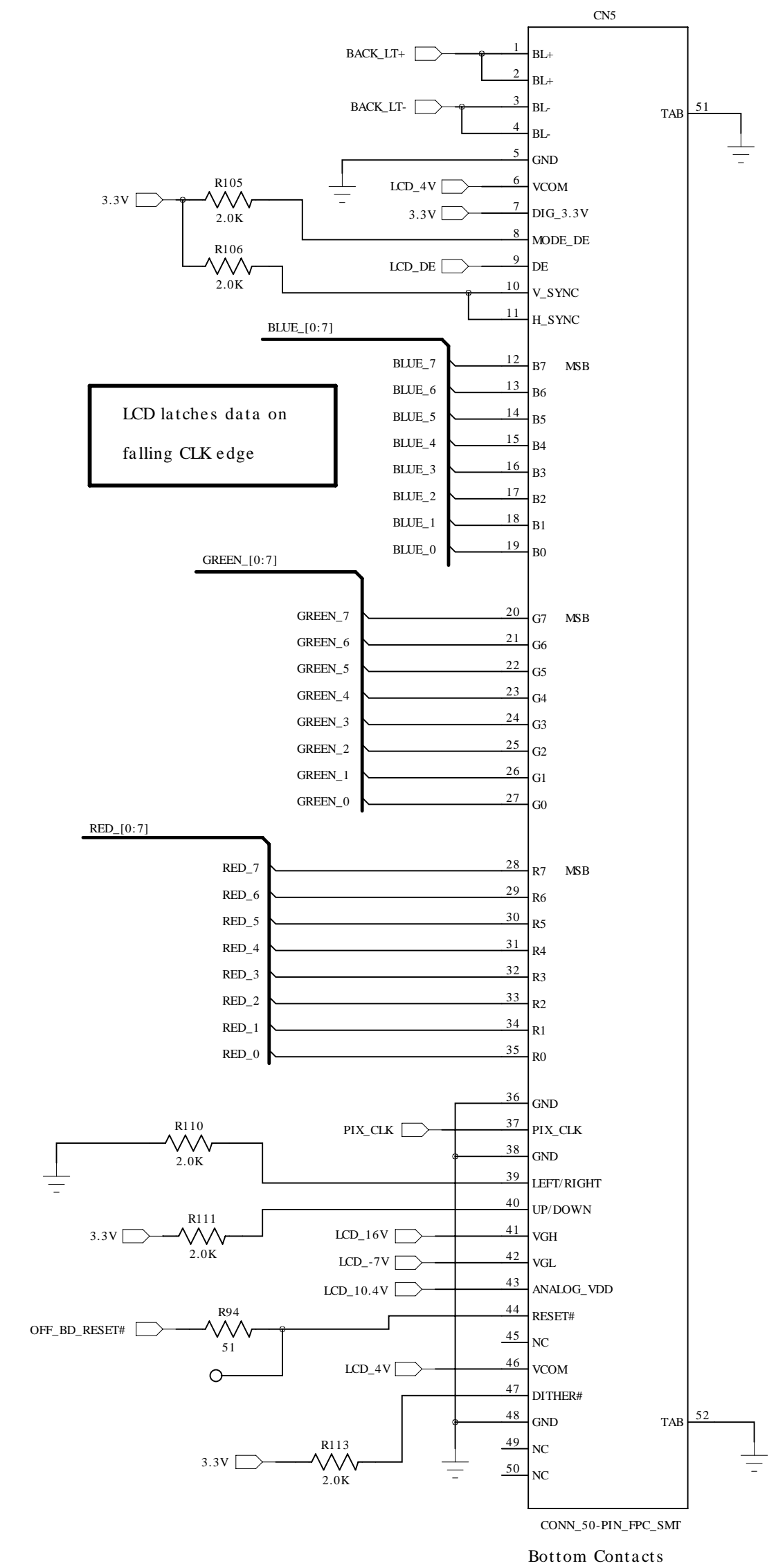
Touch Screen Controller



TH Touch Screen Connector



7 inch LCD Conn.

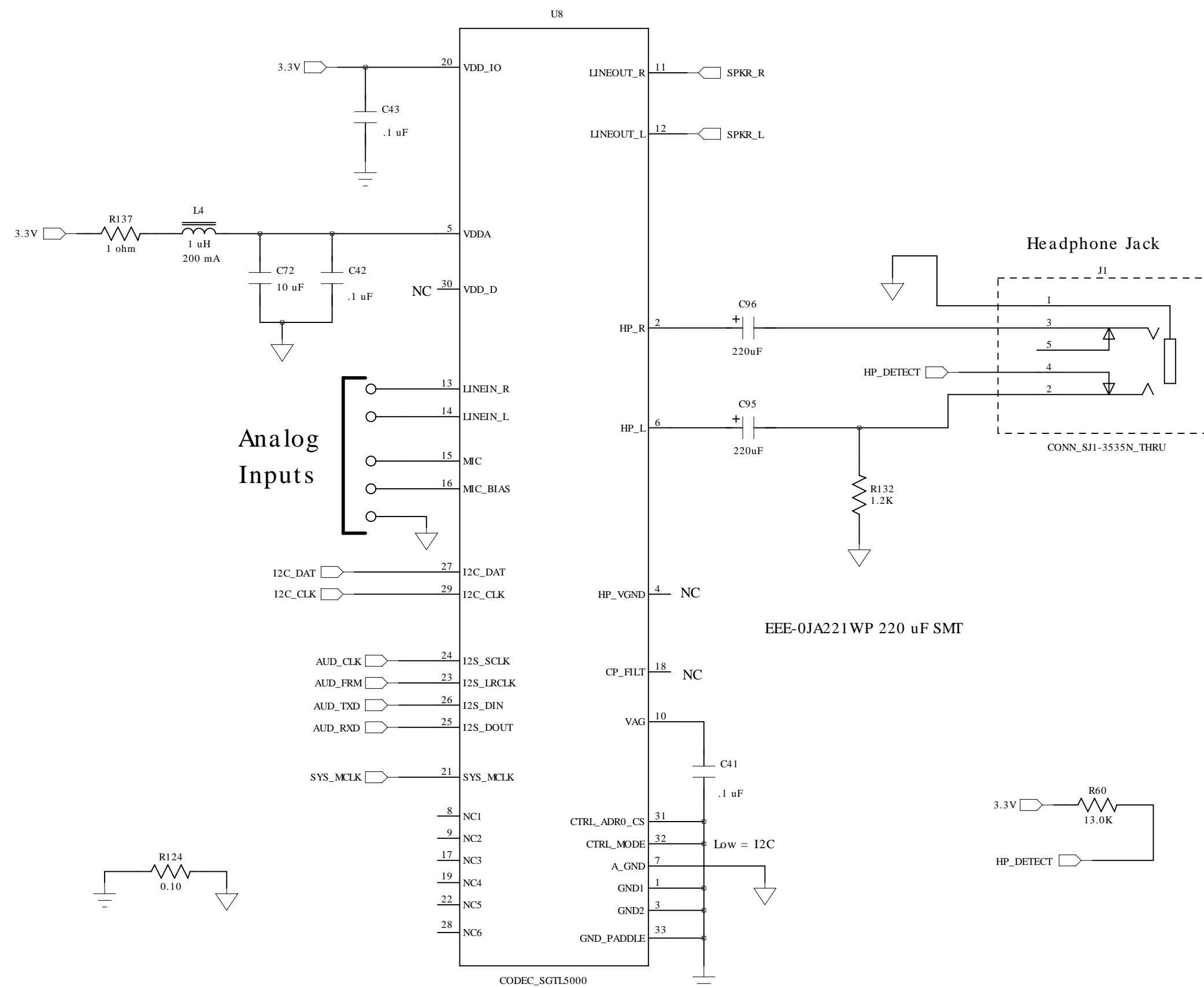


FCI# 62684-501100ALF

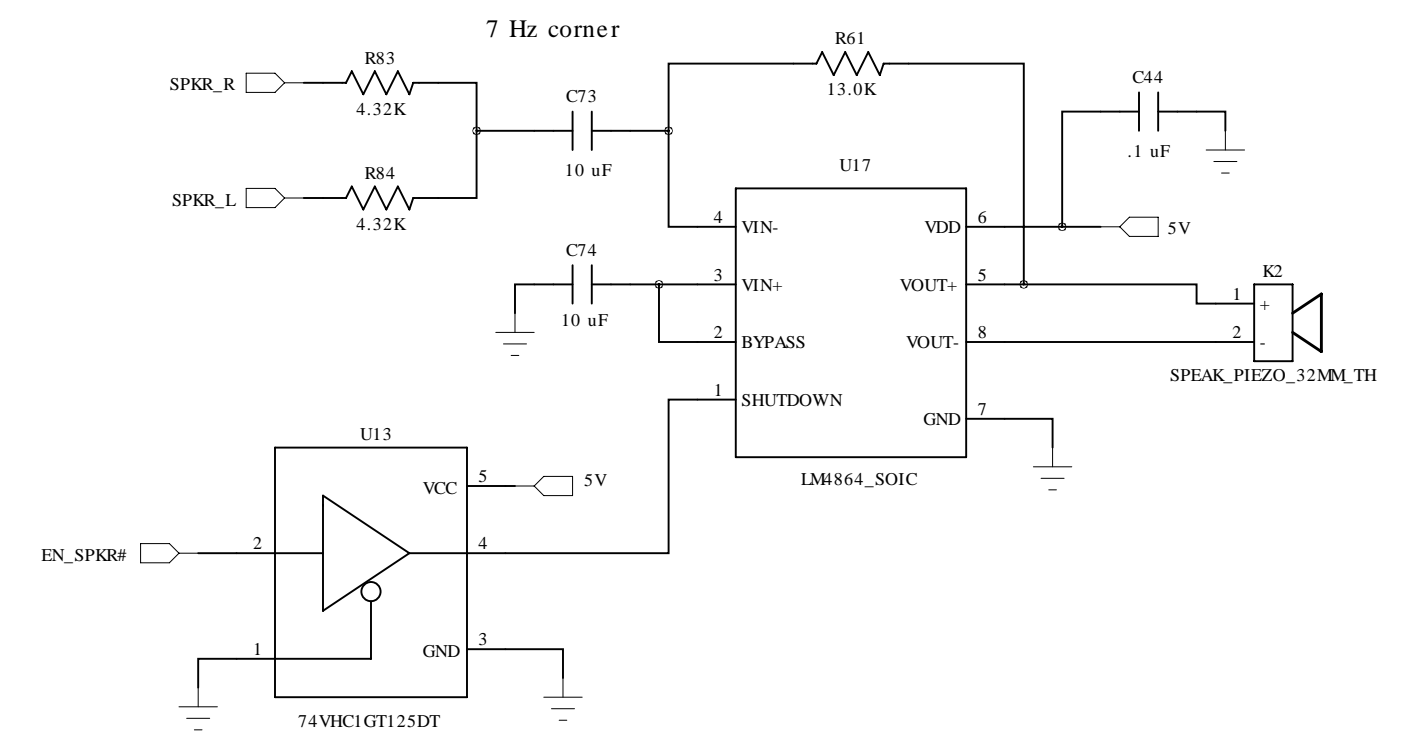
Technologic Systems	Date Nov. 25, 2012
Title: TS-8380 LCD stuff	
Rev: A	Designer RLM
	Sheet 8 of 10

Audio

Audio CODEC

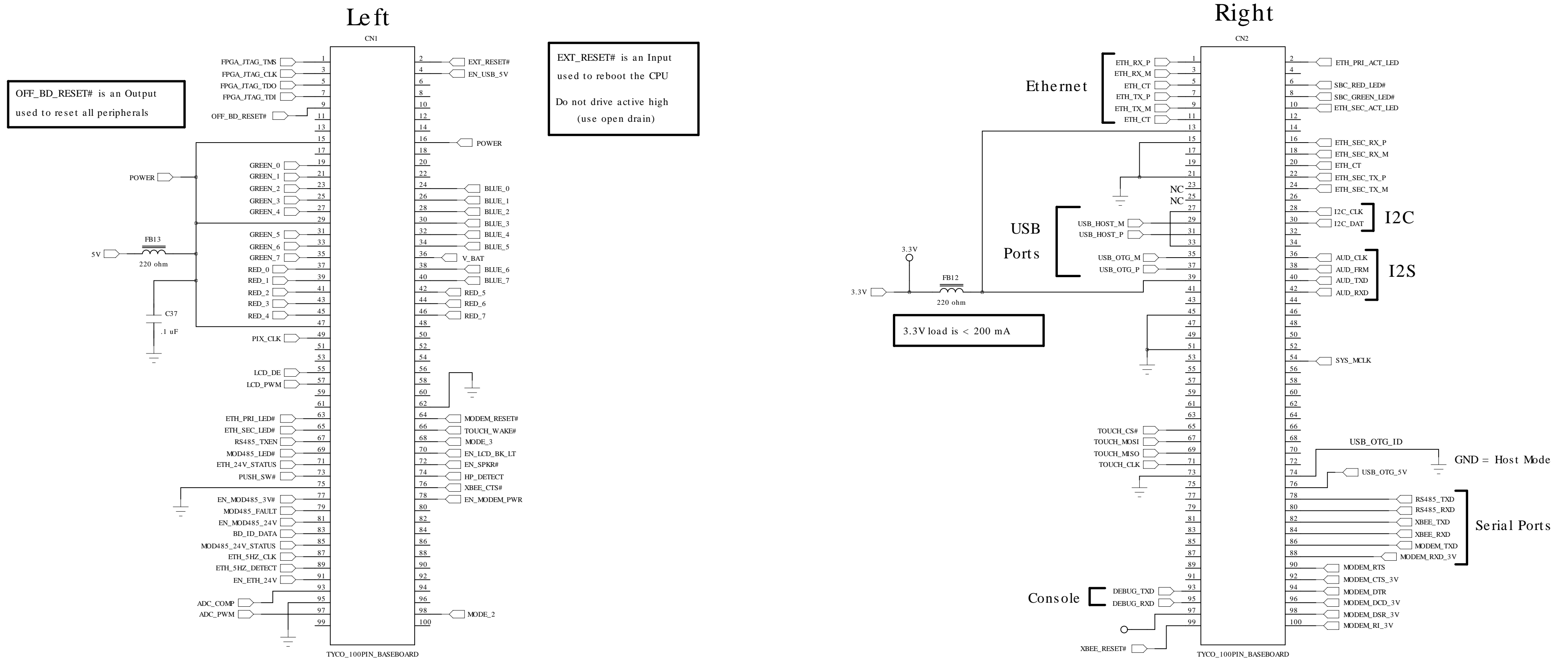


Speaker Amp



Technologic Systems	Date Nov. 25, 2012
Title: TS-8380 Audio Codec, Speaker	
Rev: A	Designer RLM Sheet 9 of 10

Two 100-pin Module Connectors



Boot Strap

Mode 2	SBC Boots from
1	NAND Flash
0	SD Card

MODE2 state is latched prior to OFF_BD_RESET# deasserted

MODE2 has a PU on the SBC module