

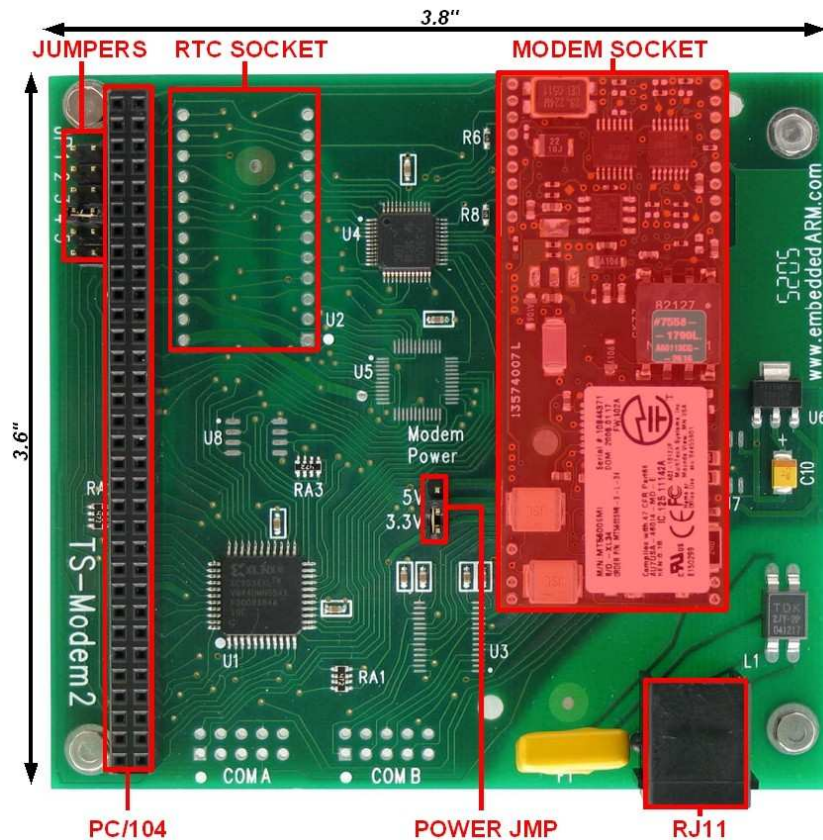
### OVERVIEW

**TS-MODEM2** is a PC/104 (standard format) peripheral board with a Modem socket, and a jumper selectable 3.3V or 5V power supply. TS-MODEM2 supports all MultiTech "Socket Modems", including:

- ✓ GSM cellular modems
- ✓ CDMA cellular modems
- ✓ Land-line modems
- ✓ Bluetooth® module

In addition, **TS-MODEM2** features a 16550 serial UART with 16-byte FIFO at the COM port used to communicate with MultiTech socket-modem and optional battery-backed real-time clock. UARTs I/O locations (COM4 or COM6) and Interrupt Lines (IRQ5, IRQ6 or IRQ7) are jumper configurable.

### HARDWARE CONFIGURATION



#### Jumper settings for COM/IO selection

COM	I/O Address	JP1
COM4	0x2E8	OFF
COM6	0x2A8	ON

#### Jumpers settings for IRQ selection

IRQ	JP4	JP5
None	OFF	OFF
IRQ6	ON	OFF
IRQ7	OFF	ON
IRQ5	ON	ON



#### Notes

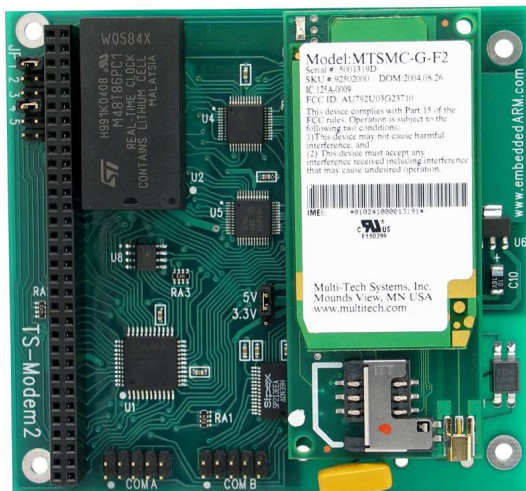
- ✓ Power to the socket modem is jumper selectable for either 3.3V or 5V
- ✓ JP2 and JP3 are not used
- ✓ The RJ11 connector (phone jack) is required for the MultiTech Land Line modem, however the user must remove it for other modems, like the cellular module
- ✓ Battery-backed RTC option is for use with TS-7200 and TS-5600 products only

## DRIVER SUPPORT

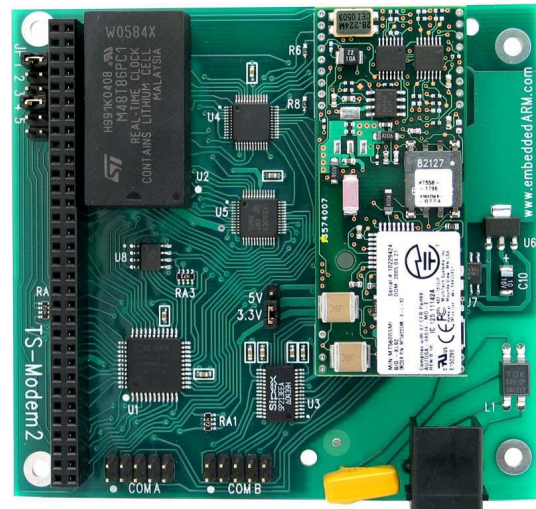
The **TS-MODEM2** uses a standard 16C550 UART, therefore any device driver for this chip will work. For example, the TS-Linux distribution already includes Linux drivers for the 16C550 UART chip by default. One can use any terminal emulator, as minicom, to open and configure the serial port in use by this board with the appropriate /dev entry, enabling communication to the modem device plugged on the socket.

For further information on modem configuration and and AT commands, refer to the MultiTech documentation available at the [product's webpage](#). Also, the same communication examples found on [TS-MODEM Manual](#) can be applied this board.

## PRODUCT VIEWS



Shown with Real Time Clock and MultiTech Cellular Socket Modem



Shown with Real Time Clock, MultiTech Land Line Socket Modem and RJ11

## CONTACT TECHNOLOGIC SYSTEMS

16525 East Laser Drive  
 Fountain Hills, AZ 85268  
 TEL 1.480.837.5200  
 FAX 1.480.837.5300

[www.embeddedARM.com](http://www.embeddedARM.com)  
[support@embeddedARM.com](mailto:support@embeddedARM.com)

## DOCUMENT HISTORY

Date of Issue/Revision	Revision Number	Comments
April 4, 2006	1.0	Initial release
May 5, 2006	1.1	Minor corrections
July 1, 2008	1.2	Fixed broken links, formatting
June 1, 2009	1.3	Updated mailing address